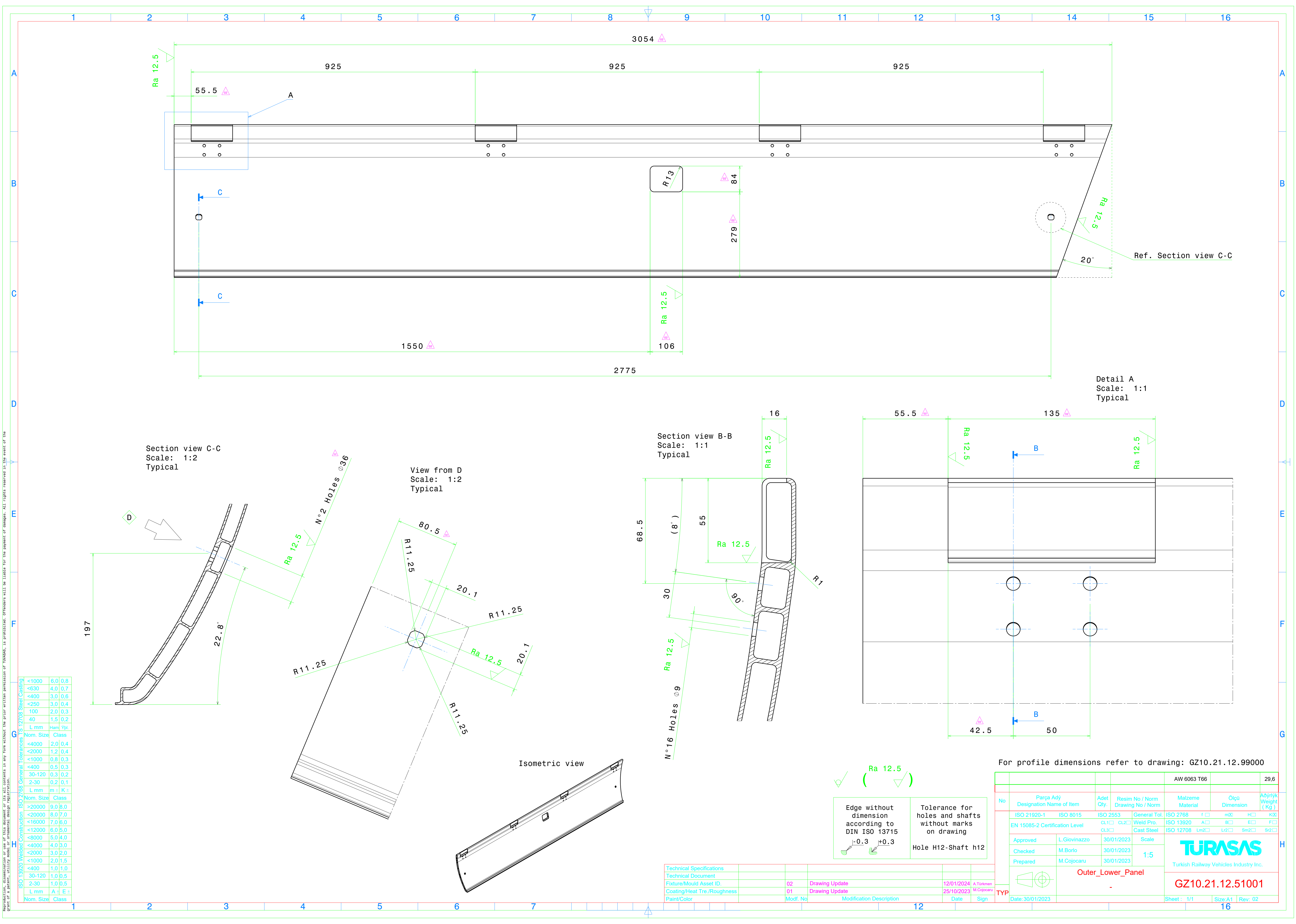


Reproduction or use of this document or its all contents in any form without the prior written permission of TURASAS is prohibited. Offenders will be liable for the payment of damages. All rights reserved in the event of the right of a patent, utility model, or trademark.



ISO 13920 Welder Construction		
Nom. Size	Class	
<1000	6.0	0.8
<630	4.0	0.7
<400	3.0	0.6
<250	3.0	0.4
100	2.0	0.3
40	1.5	0.2
L mm	mm	mm
ISO 2768 General Tolerances		
Nom. Size	Class	
<4000	2.0	0.4
<2000	1.2	0.4
<1000	0.8	0.3
<400	0.5	0.3
30-120	0.3	0.2
2-30	0.2	0.1
L mm	mm	mm
ISO 13920 Welder Construction		
Nom. Size	Class	
>20000	9.0	8.0
<20000	8.0	7.0
<16000	7.0	6.0
<12000	6.0	5.0
<8000	5.0	4.0
<4000	4.0	3.0
<2000	3.0	2.0
<1000	2.0	1.5
<400	1.0	1.0
30-120	1.0	0.5
2-30	1.0	0.5
L mm	mm	mm
Nom. Size	Class	

Technical Specifications					
Technical Document					
Fixture/Mould Asset ID	02	Drawing Update	12/01/2024	A. Türkmen	
Coating/Heat Tre./Roughness	01	Drawing Update	25/10/2023	M. Cojocar	
Paint/Color	Modf. No	Modification Description	Date	Sign	

Edge without dimension according to DIN ISO 13715	
-0.3	+0.3
Tolerance for holes and shafts without marks on drawing	
Hole H12-Shaft h12	

For profile dimensions refer to drawing: GZ10.21.12.99000					
			AW 6063 T66		29.6
No	Parça Adı Designation Name of Item	Adet Qty.	Resim No / Norm Drawing No / Norm	Malzeme Material	Ölçü Dimension
	ISO 21920-1	ISO 8015	ISO 2553	General Tol.	
	EN 15085-2 Certification Level	CL1	CL2	Weld Pro.	
	Approved	L. Giovinnazzo	30/01/2023	Scale	
	Checked	M. Borio	30/01/2023	1:5	
	Prepared	M. Cojocar	30/01/2023		
			Outer_Lower_Panel		
			-		
			GZ10.21.12.51001		
			Turkish Railway Vehicles Industry Inc.		
			Sheet: 1/1		
			Size: A1		
			Rev: 02		